



Eastern Illinois  
**FOODBANK**

# IMPACT REPORT

Fiscal Year 2025: July 1, 2024 – June 30, 2025

## FACES OF HUNGER

page 3

## ALLEVIATING HUNGER BY THE NUMBERS

page 2

## PEORIA: HERE FOR GOOD

page 5



# The face of hunger might not look like you expect.

This year, we've watched an already sustained increase in need for food assistance continue to grow. As our agency partners, staff, and volunteers work to meet this historic need, we meet someone new every day—someone who may not have ever expected to find themselves visiting a food pantry.

At any given time, more than 143,000 members of our community are facing food insecurity. With at least 1 in 8 of our neighbors being impacted, the face of hunger looks more familiar than you might think. Whether it's a child trying to focus in class with an empty stomach, a parent working multiple jobs to keep meals on the table, or a senior stretching their limited budget to make it to the end of the month, we know hunger shows up in every corner of the communities we serve.



*Kelly W. Daly*

**Kelly Daly**  
President & CEO

Hunger may not be going anywhere any time soon, but neither are we. EIF remains committed to keeping the pantry shelves stocked with nutritious groceries across our 21-county service area, helping bridge the food budget gap for the 1.6 million neighbors we serve each year. Our team continues to refine and strengthen our approach: we've used data and community feedback to make our Foodmobile program more efficient and responsive to rural and underserved areas. And thanks to our new food sourcing team, more fresh produce and pantry staples are coming through our doors every day, ensuring families across our region have access to nutritious food and hope for a better tomorrow.

This summer, we expanded our direct service into Mason, Peoria, and Tazewell counties, bringing new opportunities to local pantries and the neighbors they serve. Already, nearly 40 partners have joined our network, extending the Foodbank's mission and increasing the impact we can make together. With each new partnership, we're building a stronger, more connected community where everyone has access to the food they need to thrive.

While the need is great, EIF is prepared to continue rising to the challenge with the generous support of our philanthropic community. Thank you for joining us in alleviating hunger and nourishing stronger communities!



**Eastern Illinois  
FOODBANK**

## Board of Directors

**Chad Pilcher**

*Board Chair*  
Nutritionist, Cargill

**Jasmine Johnson**

Teaching Assistant &  
Graduate Student,  
University of Illinois

**Regina Crider**

*Vice Chair*  
Senior Policy Analyst,  
Chapin Hall

**Caroline Marzinzik**

Senior Engineer,  
PowerWorld  
Corporation

**Patricia M. Lewis**

*Secretary*  
Retired (Champaign  
Unit 4 Schools)

**Angela Schultz**

Comptroller, Village of  
Rantoul

**Mike Haag**

*Treasurer*  
Farm Manager

**Carol Wakefield**

Retired (University of  
Illinois)

**Katie Fidler**

Senior Specialist -  
Corporate Business  
Development,  
American Water

**Kelly W. Daly**

*Ex-Officio*  
President & CEO,  
Eastern Illinois  
Foodbank



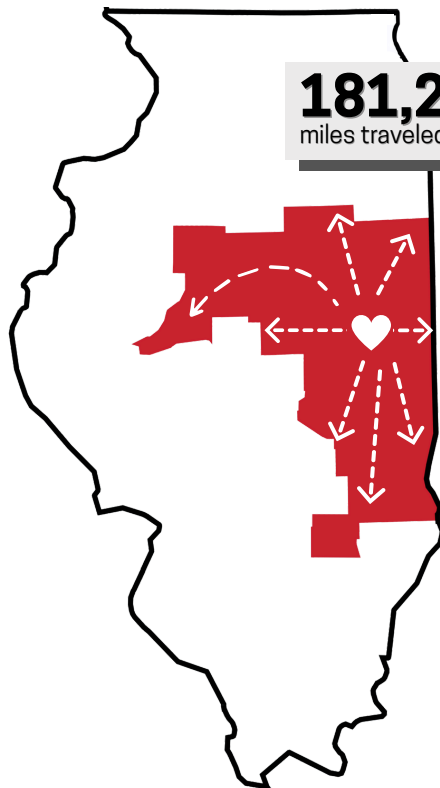
# ALLEVIATING HUNGER: BY THE NUMBERS

Fiscal Year 2025: July 1, 2024 – June 30, 2025

Eastern Illinois Foodbank is the primary food source for a network of pantries and programs working to feed our neighbors facing hunger across 21 counties. By partnering with EIF, these programs are able to save millions of dollars in food purchase and handling costs, and focus their funds on more effectively working to alleviate hunger in the community they serve. **Together, we're working to create a hunger-free eastern Illinois.**

## DID YOU KNOW?

Our pantries are currently serving at least twice as many people as they were in 2022. As EIF works to meet a historic need, community support continues to make our mission of alleviating hunger for our neighbors possible.



**2.2 million pounds**  
of fresh produce distributed



**9.7 million**  
meals provided to the communities we serve

**89,718**  
backpacks of nutritious food delivered to local children

**7,469**  
hours donated by volunteers

**164**  
agency partners distributing to communities throughout our network

**5,619**  
students and their families being supported by school markets every month

**129**  
Retailers Against Hunger partners who donated  
**1.5 million pounds**  
of groceries to EIF and our pantries



More than  
**1.6 million**  
neighbors served through our network of pantries, soup kitchens, and feeding programs.

# FACES OF HUNGER

As EIF works to meet a historic need in the communities we serve, we know that more people are seeking food assistance than ever before. That means the faces of hunger are closer than you may think—they're the children, seniors, families, students, and veterans who we call our neighbors.



*Katherine, Normal IL*

"This has made a big difference to me, ever since I started coming to Eastview," Katherine said, sharing that rising costs have forced her to start visiting more often. "It's so helpful because you have a chance to get a little of everything. It's something that can carry you a long way."

Katherine has limited mobility, and appreciates the accessibility of Eastview's pantry. She also loves getting staples like eggs and meat at the pantry, telling us that visiting the pantry is what bridges the gap from what she receives in disability and SNAP benefits. "It gives me room to buy something else. Prices are crazy, I couldn't afford those things at the store. You see how they're jacking up those egg prices, it's crazy! And you need eggs for everything."

She encourages people to support their community by giving to the Foodbank and local pantries if they can. "If they put the money in, the pantry will put the food out!"



On a recent shopping trip to St. Patrick's Food Pantry in Tolono, Meranda shared the difference the pantry has made for her family. Watch her story now!



When Christina and her grandson Owen visited the Foodmobile in Ashmore, she told us that her family has had to make sacrifices because of rising costs. After no longer qualifying for SNAP benefits, she and her husband realized their Social Security wouldn't be enough, so he began working part-time to make ends meet.

"The Foodbank makes a big difference to our family," she said. "It helps so much with the extra things—now I don't have to go out to get things like Hamburger Helper, I can worry about the staples."



*Owen, Ashmore IL*



*Sherry, Fairbury IL*

Sherry doesn't just stop by the pantry to shop—she frequently brings donations from her church! “I love the comradery and the kindness we get here,” Sherry immediately replied when we asked her favorite part about visiting Fairbury Community Food Pantry. “Sometimes we mention we didn't see something in stock, and the next time, it's there!”

“Prices are so up and down, so you find yourself going from one [grocery store] to another because you can find things less expensive at another place. But at the food pantry, you have a variety, and there's always something for everybody, no matter what foods you like.”

She loves that shopping at the pantry gives her fresh produce and the opportunity to try new things. “Some of these things I never would've seen at the store, because I'm not looking for it!”

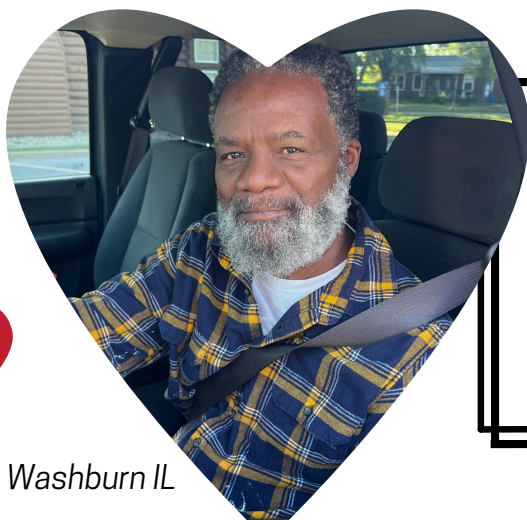
When Becky brought Sharon to pick up groceries at Life Center of Sullivan almost a year ago, she noticed they were understaffed. “They said they always need help. The next week, I started volunteering.”

“It's really important to support local pantries,” Becky told us. “When I bring Sharon in here, they've got so much stuff to choose from. They're very accommodating here, and you can tell that they care. I'm so proud that we're able to serve people.”

Becky sees firsthand how visiting a food pantry is a social outlet for many neighbors. Recently, she has noticed not just the climb in neighbors seeking food assistance, but the range of people impacted by rising costs. “Another thing I noticed is that it's people of all ages. The need has spread so wide.”



*Becky & Sharon, Sullivan IL*



*William, Washburn IL*

Because of where he lives, William experiences obstacles in conveniently accessing food. “I'm a senior and I live a long way from the city, I'm out in a rural area. I live over across the river, so I drive all the way here to get this food. This is a tremendous help.”

“I love the quality of the food—you can write that down! The donors, whoever is committing to supporting the Foodbank...they're doing a good job. The quality is exceptional.”



# Peoria: Here for Good

Since 2015, Eastern Illinois Foodbank has provided food to our neighbors facing food insecurity in the Peoria area through a partner organization. EIF headed west this year to the heart of Illinois, expanding operations to begin directly serving Mason, Peoria, and Tazewell Counties.

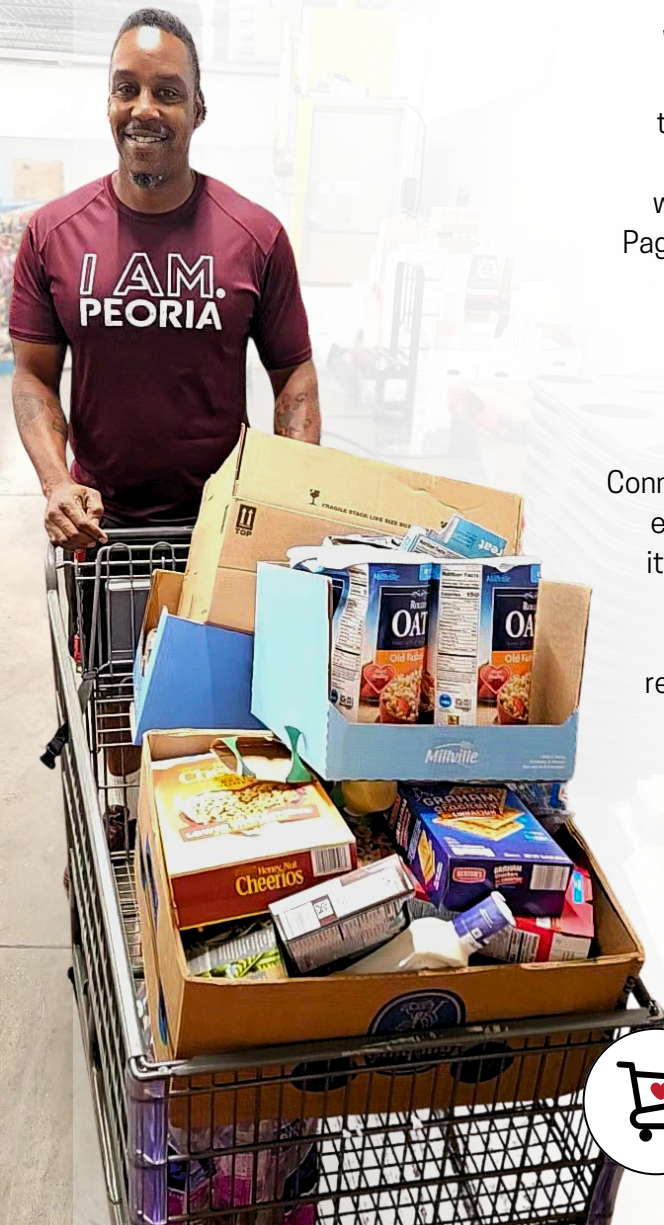
Eastern Illinois Foodbank brings a range of resources to fight hunger in the Peoria area. As a member of Feeding Illinois and the Feeding America network, EIF collaborates with sister food banks throughout the nation, sharing resources and participating in campaigns that empower us to provide more meals to the communities in our service area. After recently expanding and improving our facility, EIF is able to increase efficiency, accommodate more nutritious and fresh product, and extend the number of people we serve.

“Eastern Illinois Foodbank is thrilled to deepen our impact in the Peoria area, and ensure our neighbors facing food insecurity continue receiving healthy meals,” said Foodbank President & CEO Kelly Daly. “As we’ve worked to meet a historic need for food assistance in recent months, we like to say that the need may be great, but our community is greater. We know that the individuals and organizations who call the Peoria area home are as dedicated as we are to alleviate local hunger and stock the shelves of the pantries serving our neighbors every day.”

While agency onboarding is complete, the real work of alleviating hunger is just beginning—and the EIF team is eager to provide the support and resources our new partners need to fight hunger in the Peoria area. “With each question, EIF has been there with prompt and excellent service,” said Connie Malson and Dawn Pagan of Bartonville Food Pantry. “Our favorite part of the transition has been the monthly scheduled delivery right to our location. It allows us to create a sorting and shelving team of volunteers. Also, the capability to shop online throughout the month with many choices is appreciated.”

Connie and Dawn already appreciate not only the impact, but also the ease, of picking up donations from EIF’s local retail partners. “The items that neighbors most enjoy receiving from retailers continue to be meat, milk, and eggs, as that is where their food budgets are most challenged in recent years. We have enjoyed our new relationship with Aldi, and an added benefit is that pickup is on the very day of our pantry. We feel it has developed and improved our visibility, not only with Aldi, but also within the community.”

As the work to alleviate hunger continues, the Foodbank looks forward to building more relationships in the Peoria area as we establish collaborative, community-based solutions to provide nutritious groceries to our neighbors facing food insecurity.



*Chip from Peoria Friendship House of Christian Service picks up their first donation from Aldi!*

# MISSION IMPACT AWARDS

**Our growth and success would not be possible without the support of our community.**

These dedicated individuals and organizations have helped Eastern Illinois Foodbank further our mission of alleviating hunger and nourishing stronger communities.



## PNC

The food fund established by our generous friends at PNC has empowered us to provide nutritious meals to thousands of children and families in Woodford and McLean counties. In fiscal year 2025, that support fed 20,000 of our neighbors. We're grateful for their continued partnership in feeding our community!

## THE TUESDAY CREW

Each Tuesday morning, a dedicated group of volunteers comes to our warehouse to help with vital tasks such as sorting produce and donated food items, repacking frozen meat, and much more. We call this beloved team our Tuesday crew, and together they've donated more than 600 hours of their time this year alone!



## U OF I COMMUNITY CREDIT UNION

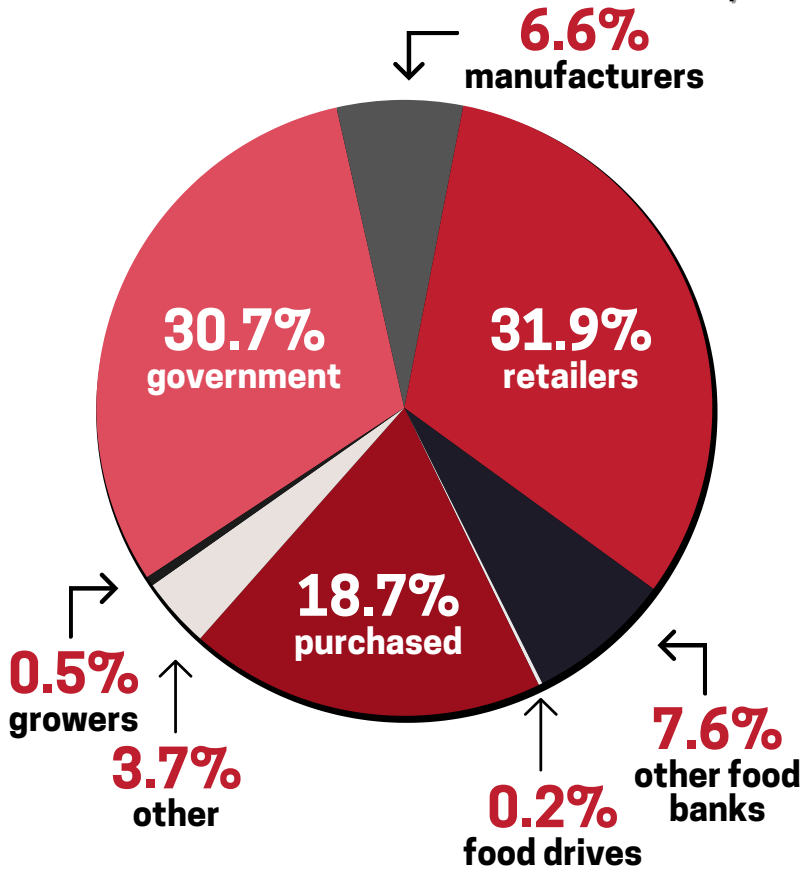
UICCU started supporting EIF staff through their partnership program this year, but their investment didn't stop there! They've also been incredible community partners, contributing to our mission through sponsoring family repack events, supporting our Prom Benefit for Hunger Relief, and volunteering at our warehouse regularly.

# FINANCIALS

Fiscal Year 2025: July 1, 2024 – June 30, 2025

## FOOD SOURCES

Where did our food come from this year?



### Public Support & Revenue

Value of donated food	\$17,333,049
Contributions	\$3,330,174
Government grants & contracts	\$1,494,125
Other grants	\$672,371
Program revenue	\$227,449
Other income	\$145,820

### Total Public Support & Revenue

**\$23,202,988**

### Expenses

Program services	\$23,089,728
Fundraising	\$773,241
Management & general	\$526,491

### Total Expenses

**\$24,389,460**

### Non-Operating

Investment income (expense)	\$141,630
-----------------------------	-----------

### Total Non-Operating

**\$141,630**

### Change in Net Assets

**-\$1,044,842**

### Net Assets

(Beginning of Year)	\$13,163,301
---------------------	--------------

### Net Assets

(End of Year)	\$12,118,456
---------------	--------------

*\*Non-audited financial results*

Stay connected to the work you support! Visit [eifoodbank.org](http://eifoodbank.org) to learn more.



## HERE IS MY HOLIDAY GIFT TO ALLEVIATE HUNGER

**Yes, I'll help ensure local kids, families, and seniors have the nourishing food they need to make this season special!**

I'm sending a gift of:

- ☐ \$250 ☐ \$100 ☐ \$50 ☐ \$25 ☐ Other \$ \_\_\_\_\_
- ☐ **Please send me information about the FEED 365 monthly giving program.**

NAME \_\_\_\_\_

ADDRESS \_\_\_\_\_

CITY \_\_\_\_\_ STATE \_\_\_\_\_ ZIP \_\_\_\_\_

Please make checks payable to:

**Eastern Illinois Foodbank**  
2405 North Shore Drive | Urbana IL 61802

Your donation is tax deductible to the full extent of the law.  
We will send you a receipt for your records.



Eastern Illinois  
**FOODBANK**

PARTNER  
FOOD BANK OF  
**FEEDING AMERICA** **FEEDING ILLINOIS**

Please charge my gift on my credit card:

- ☐ Visa ☐ MC ☐ AMEX ☐ Discover

CARD NUMBER \_\_\_\_\_

SIGNATURE \_\_\_\_\_

EXP. DATE \_\_\_\_\_

To charge your gift by phone, please call (217) 328-3663.

**It's easy! Give online at [eifoodbank.org](http://eifoodbank.org).**

Join our online community. Your email address: \_\_\_\_\_